

SOUTH EAST MARTS – HAILSHAM MARKET

Primestock report for

Wednesday 13th November 2019

PRIME CATTLE (UNDERAGE & OVERAGE) (26) Auctioneer: Roger Waters

Greater numbers forward which is good to see, Graham and Julie Beck's homebred Sussex cross steers front runners at 172p and gross £1136 per head Liverton Partners lightweight Purebred Sussex steers to 170p, twice, JJ Sellers' lightweight Purebred Sussex heifers at 169p, surely all good value as we approach the festive season.

CULL COWS (16) Auctioneer: Roger Waters

Nothing brilliant - many culls coming forward nationwide. Some good Sussex cows on offer, Poynings Grange Farm 108p and 107p, FA Starley Partnership 106p, Lean Holstein steakers with weight 83p, South Devons to feed on 90p.

CALVES (22) Auctioneer: Roger Waters

Lesser numbers trade easing back as we approach the end of November, Lime End's British Blue cross calves, good size heifers to £135 and smaller bulls to £115, Aberdeen Angus cross suckler bulls look good value £96 per head, David Harding's Aberdeen Angus cross Friesian bulls £89, £84 etc.

PIGS (16) Auctioneer: Roger Waters

After last week's fireworks back to earth this week. Norman Hick's Pietrain cross a sober £1.00 per kilo. Sue Copp's pen of Pietrain x Saddleback weaners a respectable £30 per head.

SHEEP (1417)

Auctioneer: Nick Young

MILK LAMBS (315)

Overall average 186p per kilo

Undeniably a vastly improved trade but only for proper meat lambs, the very best all north of £90. A Wood takes top call at £95

Leading prices: A Wood £95, RFF Brown £92.50, GWH Osbourne £91, Plumpton College - Lambert Farm £89, Norton Farm Partnership £88, £83, H Hawkins & Co. £87.50, £87, GN & J West £85.50, SF Sargent £85, CD & J Jeffries £85, T Avon £85, PM Bignell £85, (twice), R Spencer £85

Top prices per kilo: H Hawkins & Co. 220.8p, 186.2p, G N & J West 220.4p, 196.6p, 187.7p, Norton Farm Partnership 203.6p, 200p, 197.6p, 195.1p, RJ Verity 192p, 191.9p, GWH Osbourne 190p, Plumpton College - Lambert Farm 186.6p, 186p, 185p, PM Bignell 186.4p

STORE LAMBS (779)

Well done Hailsham market "another winner!" Trade was white hot thanks to a new buyer keen to take on all comers. The very best all north of £70 and the vast majority in the high £60's. Big lambs are wanted, smaller sorts look good value for the post Christmas trade. Please let us know what you have, do not miss this trade nothing is forever, get your store lambs to Hailsham now, furthermore the current appalling weather surely dictates that to sell now must be the best alternative. F P Russell Farms and GWH Osbourne share top honours at £73

Leading prices: FP Russell Farms £73, GWH Osbourne £73, G Isden £71, £67, JP Gingell £70, £68, £66.50, I Williams £68, J&S Harmer £68, RG Whyman £68, Douglas Partners £68, R Parks £67, M McKay £67, J Marsh £67, MA Till £66.50, MAE Clark £66.50

CULL EWES (320)

A useful entry, many more could have been sold to advantage. Put your ewes in big runs as this is the best way to sell to best advantage.

Leading prices: H Hawkins & Co. £90, Plumpton College - Lambert Farm £80, £74, £72, CD & J Jeffries £68, K Axell £67, £66, (twice) HJ Cross & Son £67, NY Estates £66, FP Russell Farms £65, R Beddows £65, E Sargent £65

Next Store Sale

Monday 18th November

Present Entries:

16 South Devon, Hereford & Sussex cross cows with their Aberdeen Angus cross calves at foot, born June/July, from C Oakley, 2 Purebred Simmental cows with their Simmental bull calves at foot and 1 Simmental x Limousin cow with her Simmental cross heifer calf at foot from N Hayes,

Plus

40 Aberdeen Angus cross, Hereford cross & British Blue cross steers & heifers, 24/30 months from J Hobden, 20 Simmental cross steers & heifers, 7 months from G Kittle, 18 Aberdeen Angus & British Blue cross steers and heifers, 20/26 months from P Bignell, 15 Limousin and British Blue cross steers & heifers, 19/23 months, from W Akehurst, 13 Charolais cross steers & heifers, 17/26 months, from SC Harris, and 8 Limousin x Hereford steers, 16/24 months from CH&P Green

PLEASE SUPPORT

Next TUESDAY, 19th NOVEMBER

at the Ardingly Showground

SOUTH EASTERN PRIMESTOCK WINTER FAYRE

ANNUAL CHRISTMAS SHOW, SALE,

PEDIGREE CALF SHOW, PIG SHOW, SAUSAGE

& MEAT PIE COMPETITIONS

inc. South East Charolais Calf Show

SHOW ENTRIES:

Sixty six show cattle & calves

Sixty show sheep

Fifty four show pigs

AUCTION of CARCASSES & POULTRY

to commence at approx. 12.30pm & not before

Forty Lamb Carcasses and Dead Poultry,

plus Turkeys, Chickens & Geese followed by Live Sheep

Abergavenny building, South of England Showground, Ardingly

Haywards Heath, West Sussex RH17 6TL

Further information: Mary Masters 01273 517824

mary.m@btconnect.com

Honorary Auctioneers:- **South East Marts**
Admission Free Everybody Welcome

~~~~~

**SHEEP SCANNING**  
**Text or Call when rams are in**  
**to get booked**  
**Ed Gingell**  
**07986 283867**

~~~~~

HAILSHAM 178th STOCK SHOW
WEDNESDAY, 4th DECEMBER
Cattle Judge - James Ludgate
Sheep Judge - David Walker
Pig Judge - James Ludgate
Best Turned Out - James Bingham

~~~~~

The Annual Dinner and Presentation Evening  
**Wednesday 4th December 2019**  
at  
**Wellshurst Golf and Country Club,**  
**North Street Hellingly**  
**BN27 4ED**  
**7.00pm for 7.30pm**  
**Tickets £30.00**

Please book - no last minute places available

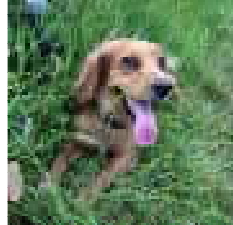
~~~~~

Show Secretary - Helen Kirby - 01825 763578
email: helen_kirby@nfumutual.co.uk

~~~~~

~~~~~  
Turners Tail Wagging Walks is my home run business,

All weather walks, includes pick up and drop off,
I am flexible so will always try my best to accommodate for individual needs so if you are looking for
someone to care for and walk your four legged family members



Please call 07500197369

Discounts available for multiple dogs. Established 2015. References Available

~~~~~  
**FARM DIRECT**

**BULL BANK**

Aberdeen Angus bulls - some sold some still available  
All ages, all prices, all registered, 18 months to 5 years  
all sold with full warranty also one available to hire  
Two Young Pedigree Hereford Bulls  
New on the market:  
Pedigree Beef Shorthorn Stock Bull

~~~~~  
BEEF BREEDING DIRECT

Twelve Pedigree South Devon bulling heifers
Six Pedigree Sussex Heifers, 24 months, High Health Status,
One year TB Parish
Twelve Purebred Sussex heifers approx. 12 months

~~~~~  
**DAIRY DIRECT**

Nineteen Friesian Holstein In-calf heifers  
majority calving January - Progeny of Dairy Herd recently dispersed  
also available - Six Holstein in-calf heifers calving December onwards

~~~~~  
Tel: RRW 07860663345 or 01323 844874
~~~~~

# Farm insurance, the way it should be

We're a family-run business and pride ourselves on forging long term relationships with our farming and agricultural clients. Covering the South East, South West and Midlands, we deliver an extensive range of farm, agri business and equine policies tailored to you.

[www.county-insurance.co.uk/farms](http://www.county-insurance.co.uk/farms)

Farm & Equine **01865 844985**

General **01865 842084**

Follow us **@County\_Farm**



Independent Insurance Brokers County Insurance Services Limited. Address and Registered Office: County House, Glyme Court, Langford Lane, Kidlington, Oxon OX5 1LQ. Authorised and regulated by the Financial Conduct Authority (FCA) (FRN: 597267). Company registered in England No. 08411634

**BUSINESS STEEL CONSTRUCTION LTD.**

**AGRICULTURAL & INDUSTRIAL  
BUILDINGS & REPAIRS**

|                                                                                                                          |                                                                                                                        |
|--------------------------------------------------------------------------------------------------------------------------|------------------------------------------------------------------------------------------------------------------------|
| <b>DANIEL HUNTER-EVANS</b>                                                                                               | <b>BRADY LONG</b>                                                                                                      |
| <b>TEL: 01825 872222</b>                                                                                                 | <b>TEL: 01425 865270</b>                                                                                               |
| <b>MOB: 07951 438793</b>                                                                                                 | <b>MOB: 07795 226296</b>                                                                                               |
| <small>EMAIL: <a href="mailto:daniel@businesssteelconstruction.co.uk">daniel@businesssteelconstruction.co.uk</a></small> | <small>EMAIL: <a href="mailto:brady@businesssteelconstruction.co.uk">brady@businesssteelconstruction.co.uk</a></small> |

**\* DESIGN, MANUFACTURE \* WEATHER DAMAGE \* EMERGENCY REPAIRS  
\* NEW BUILDINGS SUPPLIED & ERRECTED**

~~~~~

The National Sheep Association South East Region

is hosting its 3rd Sheep Health ,Wealth and Production Conference on

Wednesday 20th November at the University of Surrey School of Veterinary Medicine, in Guildford at 12.30pm.

An impressive line-up of speakers will address topics ranging from the latest on getting to grips with scab, to extracting the best from vaccines, and making maximum use of basic records, disease surveillance and laboratory investigations when managing flock health. A session exploring the potential of mixed species swards in sheep systems will follow, with the final presentations looking at consumer requirements and contrasting ways to market the ultimate product - lambs and ewes.

The full programme and line up of speakers, together with the booking form can be found by visiting:

<https://www.nationalsheep.org.uk/events/diary/25665/sheep-health-wealth-and-production-conference-2019-nsa-south-east-region/>

Alternatively call 01684 892661 (Monday to Friday 9am – 5.30pm).

Tickets cost £18.00 + VAT conference only and £33 + VAT for conference and supper. Booking closes on Friday 15 November so don't delay book your place(s) today!

~~~~~

### R.A.B.I. CAROL EVENING

at HAILSHAM MARKET

*to be held on*

**FRIDAY, 6th DECEMBER at 7.30pm**

**Tickets £7**

**available from Sally Field - 01903 882741**

**Derek Cleaver - 01323 304829**

**axedc@talktalk.net**

**Gill Hesselgrave - 01323 844613**

**[stonehouse@hessel.force9.co.uk](mailto:stonehouse@hessel.force9.co.uk)**

~~~~~



HOLTRACTORS LTD, Hailsham – Sussex

Phone 01323 841024 Mobile 07850851941 After Hours 01323 840077

www.holtractors.co.uk

'16 JD 6120R auto track steer, sat nav, Starfire JD 623R loader
Ford 5610 2 w/d AP cab c/w breakers M/F 50B H/duty loading tractor
JCB Fastrac 1135 Slurry tanks 600-2500 Gall
'89 Case 885 4 w/d c/w loader Sprayers 300 - 1500 litres
Internationals 574 - 674 - Hydro 85 Choice of 1 to 6 furrow ploughs
Welgar AP530-630-730-830 conv. balers Grain/Silage, bale, corn, dump and GP trailers
Tyres & wheels for tractors & trailers,
'90 Ford 6610 SQ 4 w/d New transport boxes – Toppers
Sanderson Teleporters TL6 TL7 Chain harrows, p/hole borers, rollers,
'88 Ford 6610, 4 w/d New fertiliser spreaders & various others
Ford 1988 5610 4w/d c/w Loader Rotospreaders, subsoilers, cultivators, etc.
'83 M/F 250 / 135 / 590 / 50B+ loader Welgar - 530 - 630 x 2 - 730 balers
Vaderstat 6.2m Hyd. Rollers c/w breakers Welgar RP 12 x 4 - & J/D 346
Iseki, Kubota & Ford compact tractors Various mowers, tedders, rakes,
Teagle Tomahawk 8080 trailed feeder/bedder Flat 8 grabs, Accumulators, Spikes
Lawrence Edwards 6500 Supa Wrap trailed wrapper Claas 55-60-65 balers
Welger D4000 Big SQ Baler Claas Liner 3000 4 Rotor Rake
Teagle Tomahawk 4040 JD 224T Conv Baler JD 545 R/Baler
Loaders to fit many tractors ~ Tractors & Machinery wanted



**THE FARMERS
FAVOURITE
WORK BOOT**

K&T FOOTWEAR
Call 0771 503 51 31
Web kandtfootwear.co.uk
Facebook facebook.com/kandtfootwear

REDBACK
100% AUSTRALIAN BOOT COMPANY

South East Marts

Market Street

Hailsham

East Sussex

BN27 2AG

01323 844874

07860 663345

info@southeastmarts.co.uk

www.southeastmarts.co.uk

